

6

5

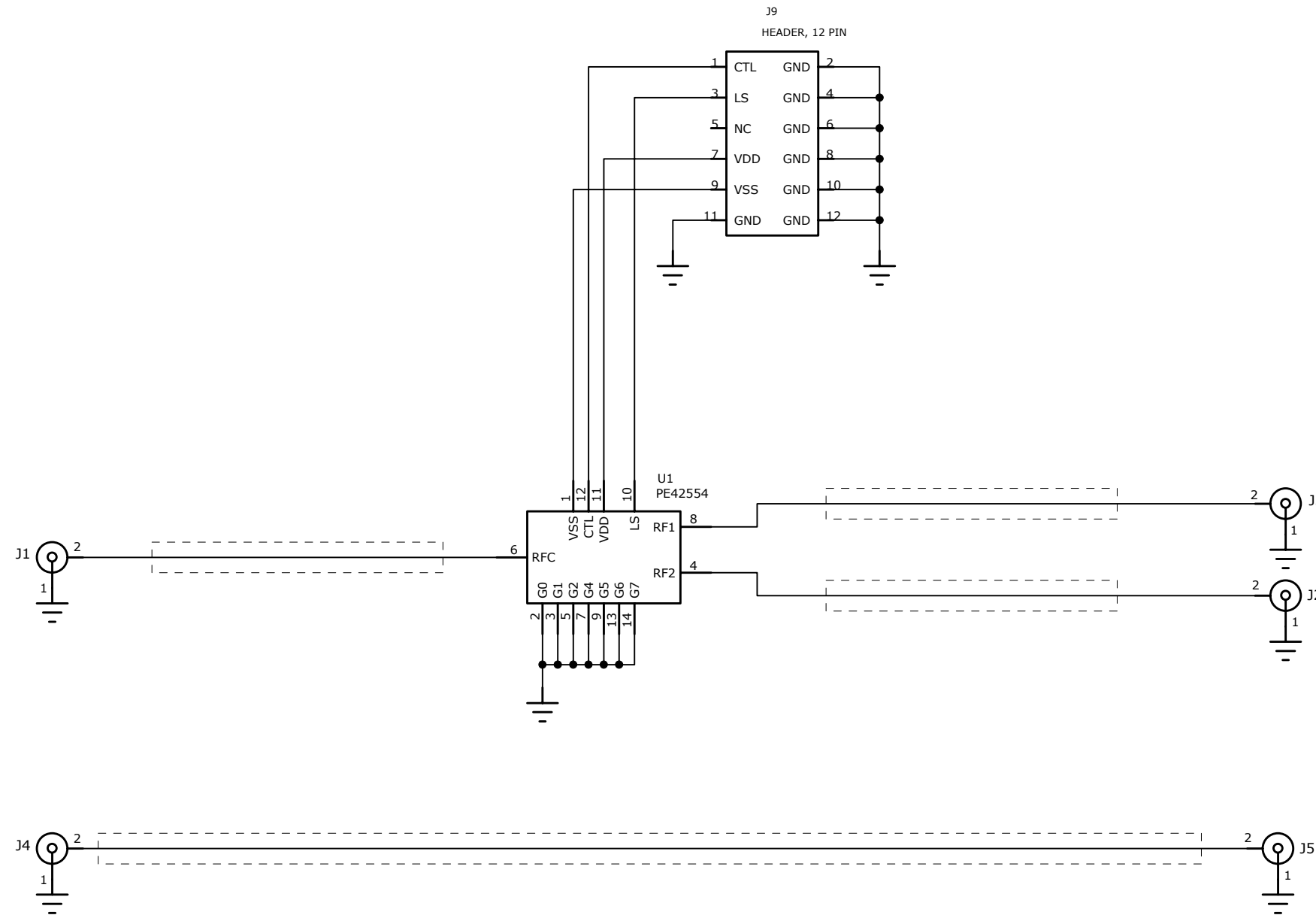
4

3

2

1

REVISION RECORD			
LTR	ECO NO:	APPROVED:	DATE:



General Comments

--
Transmission lines connected to J1, J2, and J3 should have exactly the same electrical length.

The path from J2 to J3 including the distance through the part should have the same length as J4 and J5 and be in parallel to J4 to J5.

NOTES:

- 1. USE 101-0402-01 PCB

COMPANY: PEREGRINE SEMICONDUCTOR			
TITLE: SCHEMATIC, 13.5 GHz SPDT ATE SWITCH			
CODE:	SIZE:	DRAWING NO: 102-0478	REV: 02
SCALE:		SHEET: 1 of 1	

DRAWN: JEFF LUNDY	DATED: 8-21-09
CHECKED: CHRIS BRINDLE	DATED: 8-21-09
QUALITY CONTROL:	DATED:
RELEASED:	DATED:

D

D

C

C

B

B

A

A

Item	Qty	Reference	Value	Description	Manufacturer	Manufacturer Part Number	Distributor	Distributor Part Number	Data Sheet	Notes
1	1	J9	HEADER 6X2,HEADER, 12 PIN	CONN HEADER .100 DUAL STR 72POS	Sullins Electronics Corp.s Electronics Corp.		DIGIKEY	S2021-36-ND		
2	1	U1	PE42554,PE42554	CONN HEADER .100 DUAL STR 72POS						
3	5	J1-5	SMACON3P_HIFEQ,SMA (142-0761-881/891),142-0761-881/891	SWITCH, PE42554						
4	1		PCB, 13.5 GHZ SPDT ATE SWITCH	High Frequency SMA 500 PC MOUNT, ROUND BODY WITH & WITHOUT THICK LEGS	Johnson Components Inc.		Digi-Key			
				101-0402-01						