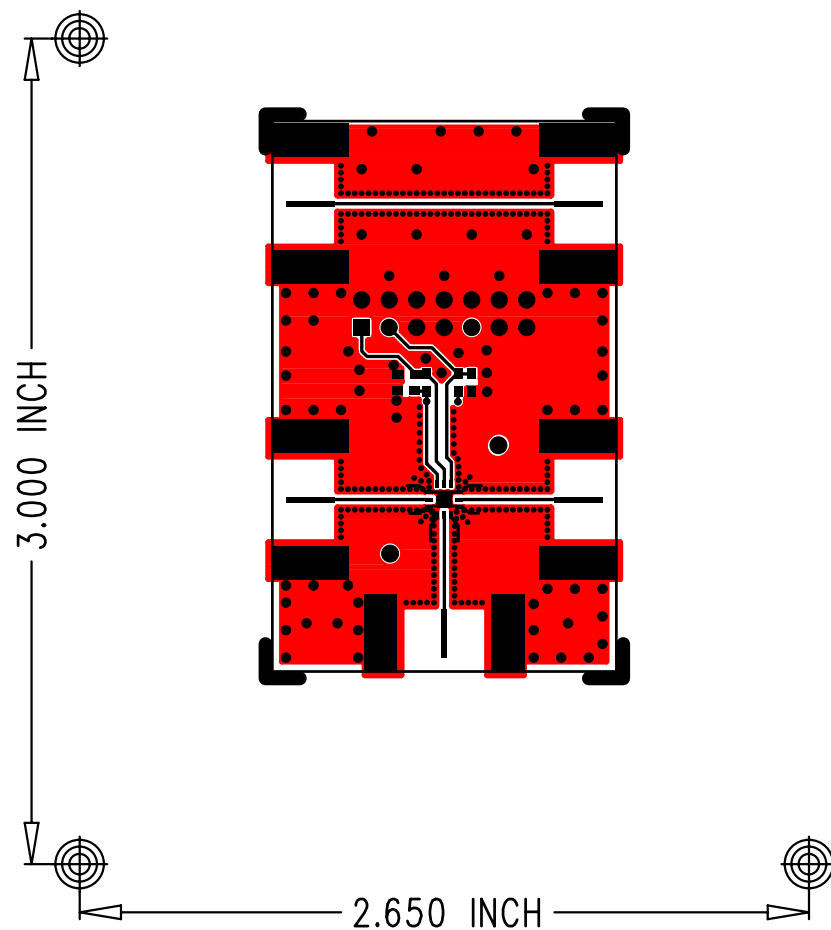

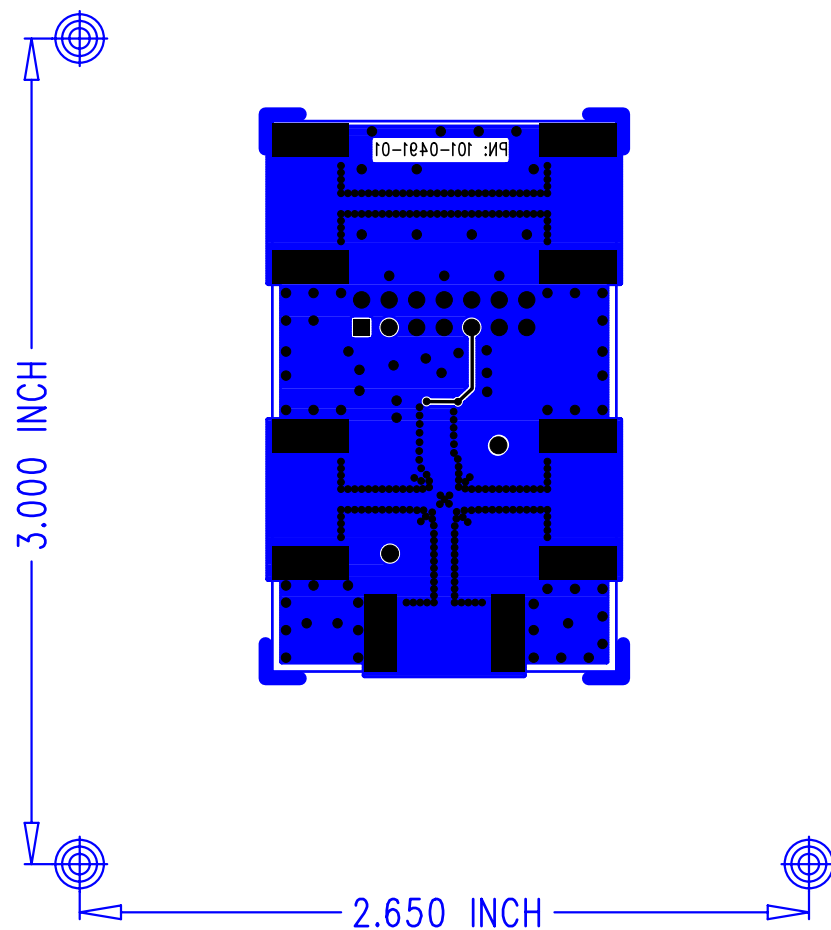

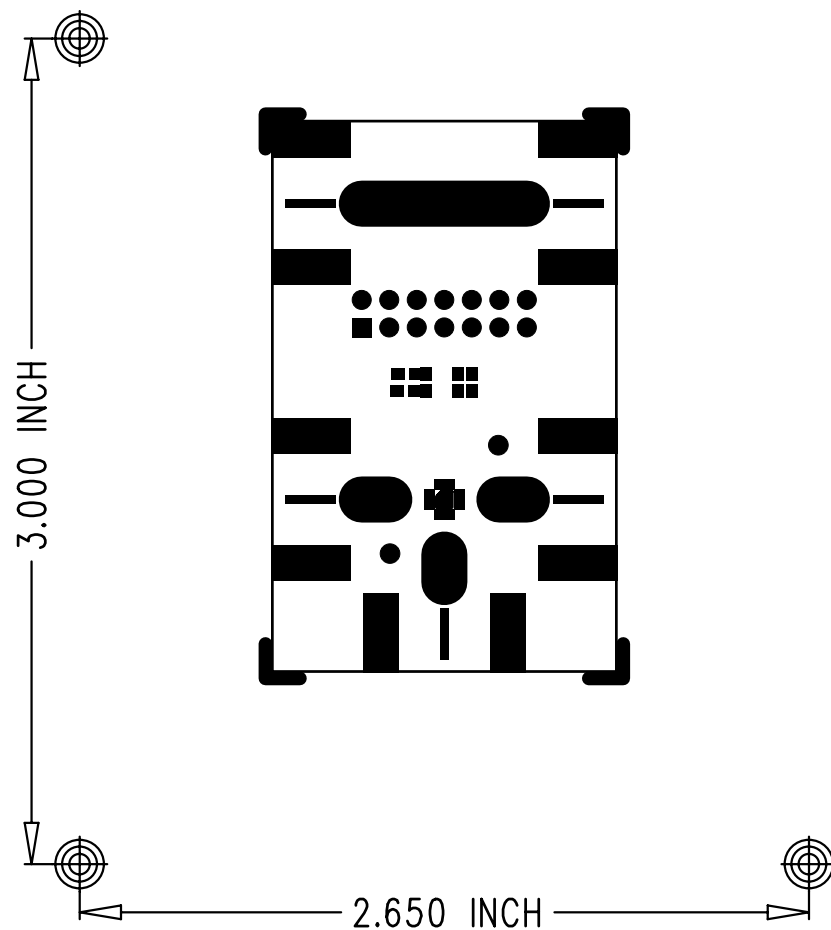
 <b>Peregrine Semiconductor</b>		9380 Carroll Park Drive San Diego, CA, 92121 (858)731-9400 Phone (858)731-9499 Fax	
BOARD NAME: 3x3 12 Lead QFN SPDT EVK PCB			
PART NUMBER: 101-0491			REV: 01
LAYER NAME: SILKSCREEN (PRIMARY SIDE)			SHEET: 1 of 6
DATE: 10-21-09	SCHEMATIC: 102-0586-01	DESIGNER: Jeff Lundy	




 <b>Peregrine Semiconductor</b>		9380 Carroll Park Drive San Diego, CA, 92121 (858)731-9400 Phone (858)731-9499 Fax	
BOARD NAME: 3x3 12 Lead QFN SPDT EVK PCB			
PART NUMBER: 101-0491			REV: 01
LAYER NAME: LAYER 1 (PRIMARY SIDE)			SHEET: 3 of 6
DATE: 10-21-09	SCHEMATIC: 102-0586-01	DESIGNER: Jeff Lundy	



		<b>Peregrine</b> Semiconductor		9380 Carroll Park Drive San Diego, CA, 92121 (858)731-9400 Phone (858)731-9499 Fax	
BOARD NAME: 3x3 12 Lead QFN SPDT EVK PCB					
PART NUMBER: 101-0491				REV: 01	
LAYER NAME: LAYER 2 (SECONDARY SIDE)				SHEET: 4 of 6	
DATE: 10-21-09		SCHEMATIC: 102-0586-01		DESIGNER: Jeff Lundy	



 <b>Peregrine Semiconductor</b>		9380 Carroll Park Drive San Diego, CA, 92121 (858)731-9400 Phone (858)731-9499 Fax	
BOARD NAME: 3x3 12 Lead QFN SPDT EVK PCB			
PART NUMBER: 101-0491			REV: 01
LAYER NAME: SOLDER MASK (PRIMARY SIDE)			SHEET: 2 of 6
DATE: 10-21-09	SCHEMATIC: 102-0586-01	DESIGNER: Jeff Lundy	



4		3		2		FSCM DWG NO.		SH	REV																																																																																																																																																																																																							
<div>LAYUP DETAIL 2 LAYER</div> <div></div> <div></div> <div></div> <table><tr><td>BOARD NAME:</td><td colspan="3">3x3 12 Lead QFN SPDT EVK PCB</td><td>REV:</td><td>01</td></tr><tr><td>PART NAME:</td><td colspan="3">101-0491</td><td>SHEET:</td><td>3 of 6</td></tr><tr><td>LAYER NAME:</td><td colspan="3">LAYER 1 (PRIMARY SIDE)</td><td>DESIGNER:</td><td>Jeff Lundy</td></tr><tr><td>DATE:</td><td>10-21-09</td><td>SCHEMATIC:</td><td>101-0586-01</td><td></td><td></td></tr></table> <div><div>DETAIL "A"</div><div></div></div> <div><table><tr><td>QTY REQD</td><td>FSCM NO.</td><td>PART OR IDENTIFYING NO.</td><td>NOMENCLATURE OR DESCRIPTION</td><td>MATERIAL SPECIFICATION</td></tr><tr><td colspan="5">UNLESS OTHERWISE SPECIFIED ALL DIMENSIONS ARE IN INCHES TOLERANCES ARE: FRACTIONS DECIMALS ANGLES ± .XX .XXX= ±</td></tr><tr><td colspan="2">MATERIAL</td><td colspan="3">CONTRACT NO.</td></tr><tr><td colspan="2">FINISH</td><td colspan="3">APPROVALS DATE</td></tr><tr><td colspan="2">NEXT ASSY USED ON</td><td colspan="3">DRAWN JEFF LUNDY 10-21-09</td></tr><tr><td colspan="2">APPLICATION</td><td colspan="3">CHECKED MARK ENGLEKIRK 10-21-09</td></tr><tr><td colspan="2">DO NOT SCALE DRAWING</td><td colspan="3">ISSUED</td></tr></table><div><div>COMPANY</div><div></div><div>9450 Carroll Park Drive, San Diego, CA, 92121. (858)731-9400 Phone, (858)731-9499 Fax.</div></div><table><tr><td colspan="2">TITLE</td><td colspan="2">PCB, 3x3 12 Lead QFN SPDT EVK</td></tr><tr><td>SIZE</td><td>FSCM NO.</td><td>DWG NO.</td><td>REV.</td></tr><tr><td>C</td><td></td><td>101-0491</td><td>01</td></tr><tr><td colspan="2">SCALE: NONE</td><td colspan="2">SHEET 1 OF 1</td></tr></table></div>						BOARD NAME:	3x3 12 Lead QFN SPDT EVK PCB			REV:	01	PART NAME:	101-0491			SHEET:	3 of 6	LAYER NAME:	LAYER 1 (PRIMARY SIDE)			DESIGNER:	Jeff Lundy	DATE:	10-21-09	SCHEMATIC:	101-0586-01			QTY REQD	FSCM NO.	PART OR IDENTIFYING NO.	NOMENCLATURE OR DESCRIPTION	MATERIAL SPECIFICATION	UNLESS OTHERWISE SPECIFIED ALL DIMENSIONS ARE IN INCHES TOLERANCES ARE: FRACTIONS DECIMALS ANGLES ± .XX .XXX= ±					MATERIAL		CONTRACT NO.			FINISH		APPROVALS DATE			NEXT ASSY USED ON		DRAWN JEFF LUNDY 10-21-09			APPLICATION		CHECKED MARK ENGLEKIRK 10-21-09			DO NOT SCALE DRAWING		ISSUED			TITLE		PCB, 3x3 12 Lead QFN SPDT EVK		SIZE	FSCM NO.	DWG NO.	REV.	C		101-0491	01	SCALE: NONE		SHEET 1 OF 1		<div>REVISIONS</div> <table><thead><tr><th>ZONE</th><th>REV</th><th>DESCRIPTION</th><th>DATE</th><th>APPROVED</th></tr></thead><tbody><tr><td colspan="5">17. THIS PCB TO BE ROHS COMPLIANT IN BOTH MATERIALS ANDMANUFACTURING PROCESSES.</td></tr><tr><td colspan="5">16. GROUND PLANE UNDER TRANSMISSION LINES SHALL BE CONTINUOUS. PLEASE MAKE SURE THE PLANE IS NOT BROKEN UNDER TRANSMISSION LINES BY UL LOGOS.</td></tr><tr><td colspan="5">15. ALL 75 OHM RF TRANSMISSION LINES WITH 12 MIL WIDTH AND 12 MIL GAPS SHALL HAVE A TOLERANCE OF (+/- 1/2 MIL) ON THE TRACE AND GAP OF ARTWORK ORIGINALS.</td></tr><tr><td colspan="5">14. PLATE WITH 8 +/- 2 uIN MINIMUM IMMERSION GOLD OVER 175 +/- 75 uIN MINIMUM ELECTROLESS NICKEL OVER COPPER.</td></tr><tr><td colspan="5">13. ALL BOARDS TO BE ELECTRICALY TESTED WITH SUPPLIED IPC-D-356A NETLIST (*IPC FILE).</td></tr><tr><td colspan="5">12. SURFACE MOUNT PAD SOLDER PLATING MUST BE FLAT TO A MAXIMUM OF .003" ABOVE BOARD SURFACE.</td></tr><tr><td colspan="5">11. DIMENSIONS AND TOLERANCES PER ANSI Y14.5M.</td></tr><tr><td colspan="5">10. FABRICATE IN ACCORDANCE WITH IPC-6012, TYPE 3, CLASS 2.</td></tr><tr><td colspan="5">9. BOARD SHALL MEET THE REQUIREMENTS OF UL796 WITH A FLAMMABILITY RATING OF 94V-0. VENDOR'S UL LOGO OR DESIGNATION AND DATE SHALL BE LOCATED ON THE BOTTOM SIDE.</td></tr><tr><td colspan="5">8. REMOVE ALL BURRS AND BREAK SHARP EDGES .015 MAX.</td></tr><tr><td colspan="5">7. APPLY SILKSCREEN, AS REQUIRED, USING WHITE EPOXY INK.</td></tr><tr><td colspan="5">6. WARP OR TWIST OF BOARD SHALL NOT EXCEED 10x.</td></tr><tr><td colspan="5">5. APPLY SOLDERMASK (LIQUID PHOTO IMAGEABLE) OVER BARE GOLD, SOLDERMASK TO BE PER IPC-SM-840, CLASS T, COLOR: GREEN. ALL EXPOSED CONDUCTIVE SURFACES TO BE GOLD COATED.</td></tr><tr><td colspan="5">4. CONDUCTOR WIDTHS AND SPACING SHALL BE WITHIN +/-10x OF ARTWORK ORIGINALS.</td></tr><tr><td colspan="5">3. ALL HOLES SHALL BE LOCATED WITHIN .003" DIAMETER OF TRUE POSITION. LAYER TO LAYER REGISTRATION SHALL BE WITHIN .003". ALL HOLES SURROUNDED BY LAND SHALL HAVE A MINIMUM ANNULAR RING OF .003.</td></tr><tr><td colspan="5">2. UNLESS OTHERWISE SPECIFIED ALL HOLE DIMENSIONS APPLY AFTER PLATING. ALL PLATED THROUGH HOLES TO HAVE A MINIMUM OF .001" COPPER.</td></tr><tr><td colspan="5">1. MATERIAL: FR-4 COPPER CLAD PLASTIC SHEET PER IPC-4101 TYPE GFN FINISHED COPPER WEIGHT TO BE: 1.5 OZ. COPPER. LAMINATE USING PRE-PREG MATERIAL PER IPC-4101, TYPE PC-GF. OVERALL BOARD THICKNESS TO BE .0322 +/- .007.</td></tr></tbody></table> <div>NOTES: UNLESS OTHERWISE SPECIFIED</div> <div><table><thead><tr><th>SIZE</th><th>QTY</th><th>SYM</th><th>PLATED</th><th>TOL</th></tr></thead><tbody><tr><td>25</td><td>67</td><td>+</td><td>YES</td><td>+/-0.003</td></tr><tr><td>62</td><td>1</td><td>X</td><td>NO</td><td>+/-0.003</td></tr><tr><td>12</td><td>239</td><td>□</td><td>YES</td><td>+/-0.003</td></tr><tr><td>62 x 67</td><td>1</td><td>◇</td><td>NO</td><td>+/-0.003</td></tr><tr><td>37</td><td>14</td><td>X</td><td>YES</td><td>+/-0.003</td></tr></tbody></table><div>SLOT DETAIL "A"</div></div>				ZONE	REV	DESCRIPTION	DATE	APPROVED	17. THIS PCB TO BE ROHS COMPLIANT IN BOTH MATERIALS ANDMANUFACTURING PROCESSES.					16. GROUND PLANE UNDER TRANSMISSION LINES SHALL BE CONTINUOUS. PLEASE MAKE SURE THE PLANE IS NOT BROKEN UNDER TRANSMISSION LINES BY UL LOGOS.					15. ALL 75 OHM RF TRANSMISSION LINES WITH 12 MIL WIDTH AND 12 MIL GAPS SHALL HAVE A TOLERANCE OF (+/- 1/2 MIL) ON THE TRACE AND GAP OF ARTWORK ORIGINALS.					14. PLATE WITH 8 +/- 2 uIN MINIMUM IMMERSION GOLD OVER 175 +/- 75 uIN MINIMUM ELECTROLESS NICKEL OVER COPPER.					13. ALL BOARDS TO BE ELECTRICALY TESTED WITH SUPPLIED IPC-D-356A NETLIST (*IPC FILE).					12. SURFACE MOUNT PAD SOLDER PLATING MUST BE FLAT TO A MAXIMUM OF .003" ABOVE BOARD SURFACE.					11. DIMENSIONS AND TOLERANCES PER ANSI Y14.5M.					10. FABRICATE IN ACCORDANCE WITH IPC-6012, TYPE 3, CLASS 2.					9. BOARD SHALL MEET THE REQUIREMENTS OF UL796 WITH A FLAMMABILITY RATING OF 94V-0. VENDOR'S UL LOGO OR DESIGNATION AND DATE SHALL BE LOCATED ON THE BOTTOM SIDE.					8. REMOVE ALL BURRS AND BREAK SHARP EDGES .015 MAX.					7. APPLY SILKSCREEN, AS REQUIRED, USING WHITE EPOXY INK.					6. WARP OR TWIST OF BOARD SHALL NOT EXCEED 10x.					5. APPLY SOLDERMASK (LIQUID PHOTO IMAGEABLE) OVER BARE GOLD, SOLDERMASK TO BE PER IPC-SM-840, CLASS T, COLOR: GREEN. ALL EXPOSED CONDUCTIVE SURFACES TO BE GOLD COATED.					4. CONDUCTOR WIDTHS AND SPACING SHALL BE WITHIN +/-10x OF ARTWORK ORIGINALS.					3. ALL HOLES SHALL BE LOCATED WITHIN .003" DIAMETER OF TRUE POSITION. LAYER TO LAYER REGISTRATION SHALL BE WITHIN .003". ALL HOLES SURROUNDED BY LAND SHALL HAVE A MINIMUM ANNULAR RING OF .003.					2. UNLESS OTHERWISE SPECIFIED ALL HOLE DIMENSIONS APPLY AFTER PLATING. ALL PLATED THROUGH HOLES TO HAVE A MINIMUM OF .001" COPPER.					1. MATERIAL: FR-4 COPPER CLAD PLASTIC SHEET PER IPC-4101 TYPE GFN FINISHED COPPER WEIGHT TO BE: 1.5 OZ. COPPER. LAMINATE USING PRE-PREG MATERIAL PER IPC-4101, TYPE PC-GF. OVERALL BOARD THICKNESS TO BE .0322 +/- .007.					SIZE	QTY	SYM	PLATED	TOL	25	67	+	YES	+/-0.003	62	1	X	NO	+/-0.003	12	239	□	YES	+/-0.003	62 x 67	1	◇	NO	+/-0.003	37	14	X	YES	+/-0.003				
						BOARD NAME:	3x3 12 Lead QFN SPDT EVK PCB			REV:	01																																																																																																																																																																																																					
PART NAME:	101-0491			SHEET:	3 of 6																																																																																																																																																																																																											
LAYER NAME:	LAYER 1 (PRIMARY SIDE)			DESIGNER:	Jeff Lundy																																																																																																																																																																																																											
DATE:	10-21-09	SCHEMATIC:	101-0586-01																																																																																																																																																																																																													
QTY REQD	FSCM NO.	PART OR IDENTIFYING NO.	NOMENCLATURE OR DESCRIPTION	MATERIAL SPECIFICATION																																																																																																																																																																																																												
UNLESS OTHERWISE SPECIFIED ALL DIMENSIONS ARE IN INCHES TOLERANCES ARE: FRACTIONS DECIMALS ANGLES ± .XX .XXX= ±																																																																																																																																																																																																																
MATERIAL		CONTRACT NO.																																																																																																																																																																																																														
FINISH		APPROVALS DATE																																																																																																																																																																																																														
NEXT ASSY USED ON		DRAWN JEFF LUNDY 10-21-09																																																																																																																																																																																																														
APPLICATION		CHECKED MARK ENGLEKIRK 10-21-09																																																																																																																																																																																																														
DO NOT SCALE DRAWING		ISSUED																																																																																																																																																																																																														
TITLE		PCB, 3x3 12 Lead QFN SPDT EVK																																																																																																																																																																																																														
SIZE	FSCM NO.	DWG NO.	REV.																																																																																																																																																																																																													
C		101-0491	01																																																																																																																																																																																																													
SCALE: NONE		SHEET 1 OF 1																																																																																																																																																																																																														
ZONE	REV	DESCRIPTION	DATE	APPROVED																																																																																																																																																																																																												
17. THIS PCB TO BE ROHS COMPLIANT IN BOTH MATERIALS ANDMANUFACTURING PROCESSES.																																																																																																																																																																																																																
16. GROUND PLANE UNDER TRANSMISSION LINES SHALL BE CONTINUOUS. PLEASE MAKE SURE THE PLANE IS NOT BROKEN UNDER TRANSMISSION LINES BY UL LOGOS.																																																																																																																																																																																																																
15. ALL 75 OHM RF TRANSMISSION LINES WITH 12 MIL WIDTH AND 12 MIL GAPS SHALL HAVE A TOLERANCE OF (+/- 1/2 MIL) ON THE TRACE AND GAP OF ARTWORK ORIGINALS.																																																																																																																																																																																																																
14. PLATE WITH 8 +/- 2 uIN MINIMUM IMMERSION GOLD OVER 175 +/- 75 uIN MINIMUM ELECTROLESS NICKEL OVER COPPER.																																																																																																																																																																																																																
13. ALL BOARDS TO BE ELECTRICALY TESTED WITH SUPPLIED IPC-D-356A NETLIST (*IPC FILE).																																																																																																																																																																																																																
12. SURFACE MOUNT PAD SOLDER PLATING MUST BE FLAT TO A MAXIMUM OF .003" ABOVE BOARD SURFACE.																																																																																																																																																																																																																
11. DIMENSIONS AND TOLERANCES PER ANSI Y14.5M.																																																																																																																																																																																																																
10. FABRICATE IN ACCORDANCE WITH IPC-6012, TYPE 3, CLASS 2.																																																																																																																																																																																																																
9. BOARD SHALL MEET THE REQUIREMENTS OF UL796 WITH A FLAMMABILITY RATING OF 94V-0. VENDOR'S UL LOGO OR DESIGNATION AND DATE SHALL BE LOCATED ON THE BOTTOM SIDE.																																																																																																																																																																																																																
8. REMOVE ALL BURRS AND BREAK SHARP EDGES .015 MAX.																																																																																																																																																																																																																
7. APPLY SILKSCREEN, AS REQUIRED, USING WHITE EPOXY INK.																																																																																																																																																																																																																
6. WARP OR TWIST OF BOARD SHALL NOT EXCEED 10x.																																																																																																																																																																																																																
5. APPLY SOLDERMASK (LIQUID PHOTO IMAGEABLE) OVER BARE GOLD, SOLDERMASK TO BE PER IPC-SM-840, CLASS T, COLOR: GREEN. ALL EXPOSED CONDUCTIVE SURFACES TO BE GOLD COATED.																																																																																																																																																																																																																
4. CONDUCTOR WIDTHS AND SPACING SHALL BE WITHIN +/-10x OF ARTWORK ORIGINALS.																																																																																																																																																																																																																
3. ALL HOLES SHALL BE LOCATED WITHIN .003" DIAMETER OF TRUE POSITION. LAYER TO LAYER REGISTRATION SHALL BE WITHIN .003". ALL HOLES SURROUNDED BY LAND SHALL HAVE A MINIMUM ANNULAR RING OF .003.																																																																																																																																																																																																																
2. UNLESS OTHERWISE SPECIFIED ALL HOLE DIMENSIONS APPLY AFTER PLATING. ALL PLATED THROUGH HOLES TO HAVE A MINIMUM OF .001" COPPER.																																																																																																																																																																																																																
1. MATERIAL: FR-4 COPPER CLAD PLASTIC SHEET PER IPC-4101 TYPE GFN FINISHED COPPER WEIGHT TO BE: 1.5 OZ. COPPER. LAMINATE USING PRE-PREG MATERIAL PER IPC-4101, TYPE PC-GF. OVERALL BOARD THICKNESS TO BE .0322 +/- .007.																																																																																																																																																																																																																
SIZE	QTY	SYM	PLATED	TOL																																																																																																																																																																																																												
25	67	+	YES	+/-0.003																																																																																																																																																																																																												
62	1	X	NO	+/-0.003																																																																																																																																																																																																												
12	239	□	YES	+/-0.003																																																																																																																																																																																																												
62 x 67	1	◇	NO	+/-0.003																																																																																																																																																																																																												
37	14	X	YES	+/-0.003																																																																																																																																																																																																												